

- 1) Take a look at the How to Apply page and check the application schedule.
- 2) Read the Application Guidelines and start gathering the required documents.
- 3) Start the application process!

\*A Pre-Application Consultation Service is available to prospective applicants. Please see the How to Apply page for details.



<http://en.ritsumei.ac.jp/skp/apply/howto/>



**Explore. Learn. Succeed.  
Go Beyond With SKP**

### Schedule

	Application		Semester				
	Start	Deadline	Orientation (Arrival in Japan)	Begins	Ends	Transcripts Sent Out	
<b>Fall</b>	Early Mar.	Early Apr.	Early Sep.	Sep. 26	Fall Semester	Jan. 31	Mid-Apr.
<b>Spring</b>	Early Oct.	Early Nov.	Mid-Mar.	Apr. 1	Spring Semester	Jul. 31	Early Oct.

\*All dates subject to change. Please see the most recent Application Guidelines on the How to Apply page for the latest info.  
\*Specific dates will be announced on the SKP website.

# Study in Kansai Program



## Study in Kansai Program

International Center at Kinugasa Campus  
56-1, Toji-in Kitamachi, Kita-ku, Kyoto, 603-8577 JAPAN  
Email: [skp@st.ritsumei.ac.jp](mailto:skp@st.ritsumei.ac.jp)





# Study in Japan With SKP



## 10 Reasons to Choose SKP

The Study in Kansai Program (SKP) is Ritsumeikan University's non-degree study abroad program. The program brings together students from around the world at RU's campuses in Kyoto, Osaka, and Shiga Prefectures.

Here are ten reasons why SKP should be the next step on your academic journey:



### 1 Study in the Kansai Region, Where Modern and Traditional Cultures Harmonize

The Kansai region in western Japan is where the traditions, history, and culture of ancient Japan live on in modern times. Historical sites attract people from all over, making it a truly international place to pursue one's studies.



### 6 Interaction in Clubs and Extracurricular Activities

RU has about 450 clubs and "circles" (common interest groups). Students have opportunities to interact with Japanese students and other international students through clubs, circles, and events on campus.

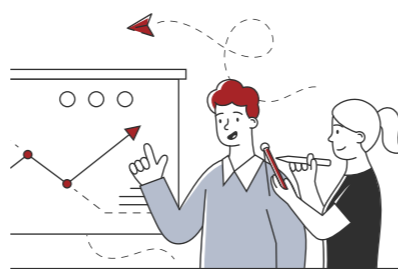
### 2 Take Classes in a Wide Range of Fields

In today's globalized world, RU strives to promote international education and research in a wide range of fields. We offer a broad range of courses spanning the social sciences, humanities, and natural sciences.



### 7 Career Advancement

Improving Japanese language skills and becoming familiar with Japanese culture through SKP has shown to be useful to students who want to continue on to graduate school or find employment in Japan.



### 3 Intensive Japanese Language Studies

In the Intensive Japanese Language track (IJL), language classes are divided into levels from elementary to upper advanced, allowing students to study intensively in a class suitable to their skill level.



### 8 Scholarships Available (With No Repayment Necessary)

Students may be eligible to receive either a JASSO scholarship from the Japan Student Services Organization (80,000 yen/month) or a RUSSES scholarship offered by RU (40,000 yen/month).

\*Applicants must be approved through a screening process.

### 4 Experience Hands-On Learning

"Campus-Specific Courses" at each campus emphasize hands-on learning. For example, at Kinugasa Campus in Kyoto, students can study Japanese traditional arts directly under masters of each art form.



### 9 Abundant and Comprehensive Support

Friendly teachers, SKP Buddies and the SKP staff provide a variety of support to help students adjust to life in Japan quickly and make their study abroad experience more meaningful.



### 5 International Exchange With Students From Around the World

At RU, there are approximately 2,000 international students from around 70 countries.\* Students can interact with peers from various countries, build new values, and make lifelong friends.

\*as of October 2019



### 10 Working Adults Are Welcome to Participate

SKP is open to those who have already graduated from university and entered the workforce. RU welcomes the participation of people with diverse backgrounds who can see Japan from different perspectives.

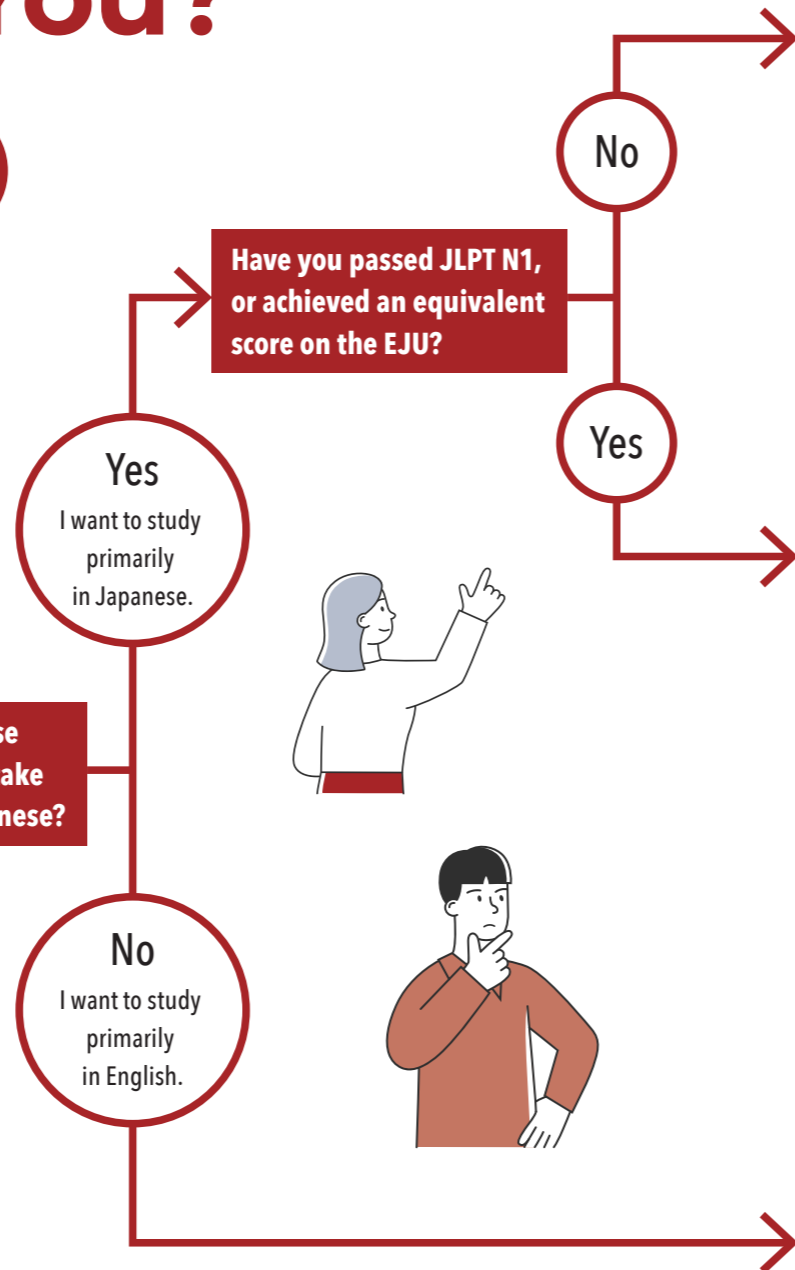


# Which Track of Study Is Right for You?

SKP students select a track of study and campus in line with their desired language of instruction as well as the courses they wish to take. Please use this chart to determine which track and campus is right for you.



**Do you want to study Japanese language intensively and/or take courses in your major in Japanese?**



Track / Description	Colleges / Graduate Schools Offering Courses:
<p><b>IJL</b> Intensive Japanese Language</p> <p>The IJL track allows students to study Japanese language intensively. The track provides a well-balanced approach to improving reading, writing, listening, and speaking skills from the beginner level all the way to the advanced level of practical academic Japanese skills required for taking university courses.</p>	<p><b>International Relations / Letters / Social Sciences</b> Offered At : Kinugasa Campus (Kyoto Pref.) <small>*This track is only offered at Kinugasa Campus.</small></p> <p><i>“I...strengthen(ed) my language skills through a complete and thorough Japanese program.”</i> - Giacomo Becchi, Italy</p>
<p><b>RCJ</b> Regular Courses in Japanese</p> <p>The RCJ track allows students with Japanese language proficiency equivalent to JLPT N1 to take both liberal arts and specialized courses offered by 16 Ritsumeikan University colleges in Japanese.</p> <p><i>“The (track) offers...the chance to study other subjects (in Japanese)... alongside Japanese students.”</i> - Miyumi Aoki, United States</p>	<p><b>Letters / Social Sciences / Law</b> Offered At : Kinugasa Campus (Kyoto Pref.)</p> <p><b>Business Administration / Policy Science / Comprehensive Psychology / Image Arts and Sciences / Information Science and Engineering /</b> Offered At : Osaka Ibaraki Campus (Osaka Pref.)</p> <p><b>Economics / Life Sciences / Sport and Health Science / Gastronomy Management / Science and Engineering*</b> Offered At : Biwako-Kusatsu Campus (Shiga Pref.) <small>*Additional procedures may be necessary. Please see the RCJ Track page for more information on registering for these courses.</small></p>
<p><b>RCE</b> Regular Courses in English</p> <p>The RCE track allows students to take courses in English in a wide range of fields. Course offerings range from those in the humanities and social sciences, such as political science, economics, business administration, sociology, cultural anthropology, law, area studies, and contemporary Japanese culture, to courses in the natural sciences such as information (computer) science.</p> <p><i>“RU offers a plethora of academic courses taught in English for students to choose from.”</i> - Cheng Da Kok, Singapore</p>	<p><b>International Relations / Letters / Social Sciences</b> Offered At : Kinugasa Campus (Kyoto Pref.)</p> <p><b>Business Administration / Policy Science / Information Science and Engineering</b> Offered At : Osaka Ibaraki Campus (Osaka Pref.)</p> <p><b>Economics</b> Offered At : Biwako-Kusatsu Campus (Shiga Pref.)</p>

### About Ritsumeikan Courses:

- Max number of courses students can register: Up to 20 credits each semester
- Number of credits per course: Varies\*
- Number of classes in each course: 15 classes per semester
- Number of classes that must be taken: 7 sessions per week\*\*

\*Please see each track's page for details.

\*\*Under Japanese law, students must attend a minimum of 10 hours of classes per week. This does not apply to students who do not enter Japan.

### Course Lists From Previous Semesters:

Refer to the available course lists from previous semesters for examples of courses offered for each track/campus.

\*Please note that courses listed may not be offered during future semesters.



**Next Page**  
Track Outline & Other Available Courses

# Track Outline

Track	<b>IJL</b> Intensive Japanese Language	<b>RCJ</b> Regular Courses in Japanese	<b>RCE</b> Regular Courses in English
Study Period	Half year (1 semester) or Full year (2 semesters)		
Class Language	Japanese (primarily)	Japanese	English
Admission Requirements	Applicants must fulfill either a) or b): <b>a) Enrolled in a university or graduate school for at least one year at the start of the program</b> <b>b) Graduated from university/ graduate school and obtained a bachelor's degree or higher, or have an equivalent academic degree</b>		
Language Requirements	Students who have never studied Japanese before must be able to conduct basic communication in English*	JLPT (Japanese Language Proficiency Test) N1 or equivalent EJU (Examination for Japanese University Admission for International Students) score	Native English speaker, or have a minimum English proficiency test score of TOEFL® iBT 68/ PBT 520, CEFR B2, or IELTS 6.0 (or equivalent)
Japanese Language Courses	✓	✓	✓**

\* Non-native English speakers that wish to take courses in English must have a minimum English proficiency test score of TOEFL® iBT 68/ PBT 520, CEFR B2, or IELTS 6.0 (or equivalent)

\*\* Kinugasa Campus: Optional Japanese language courses (introductory level; one semester only)  
 \*\* Osaka Ibaraki Campus: Optional Japanese language course (elementary level to upper advanced level)  
 \*\* Biwako-Kusatsu Campus: No Japanese language courses available

# Program Fee & Scholarships

Program Fee	One Semester	Two Semesters
Tuition	391,200 yen	782,400 yen
Document Handling Fee	10,000 yen	
Bank Transfer Fee (approx.)	10,000 yen	
Total Cost	411,200 yen	802,400 yen

\*All fees subject to change.  
 \*The program fee is waived for exchange students. However, all students must cover living expenses (which are not included in the program fee). Please see the Program Fee and Scholarships page for more information.

Scholarships	JASSO	RUSSES
Monthly Stipend	80,000 yen	40,000 yen
Eligibility	Exchange Students Only (students participating under an Agreement for Student Exchange with RU)	All Students

\*These scholarships are very competitive. Details on scholarship eligibility and application procedures can be found on the Program Fee and Scholarships page.

# Other Available Courses

## CSC Campus-Specific Courses



Students will learn about Japanese traditional culture, history, society, urban innovation, food culture, corporate activities, etc., through hands-on learning in accordance with the distinctive characteristics of each RU campus.



“ In (these)...courses, we have the chance to... appreciate and understand... Japanese traditional culture.”  
 - Ilaria Canali, Italy

- All CSC are taught primarily in Japanese, but Japanese language abilities are not required.
- Students that register for these courses must pay a mandatory activity fee for materials, etc. (varies by course)
- CSC are available for all tracks of study.



# Our Campuses

Ritsumeikan University has more than 30,000 students, faculty, and staff who contribute to the diversity of the learning environment. Here are the three campuses where SKP students take courses.



## KIC

Kinugasa Campus (KIC) is the perfect example of Kyoto's harmonization between the traditional and the modern, and is a serene environment for education. Kinugasa is the university's center of liberal arts, social science and humanities studies.



\*Tracks Offered: IJL, RCJ, RCE

## OIC

Located midway between Osaka City and Kyoto City, Osaka Ibaraki Campus (OIC) is RU's newest campus. The campus community works to facilitate collaboration with industry and government institutions and promote Ritsumeikan's activities on the frontline of social collaboration.



\*Tracks Offered: RCJ, RCE

## BKC

Biwako-Kusatsu Campus (BKC) serves as a center of education and research that integrates the sciences with the humanities. The campus is surrounded by natural beauty with mountains to the west and Lake Biwa, Japan's largest lake, to the east.



\*Tracks Offered: RCJ, RCE